



Residence Four - Elevation A

Approximately 4,047 square feet

The Palms Collection

The Palms Collection



Residence Four ~ Elevation B

Approximately 4,047 square feet





Residence Four ~ Elevation C

Approximately 4,047 square feet

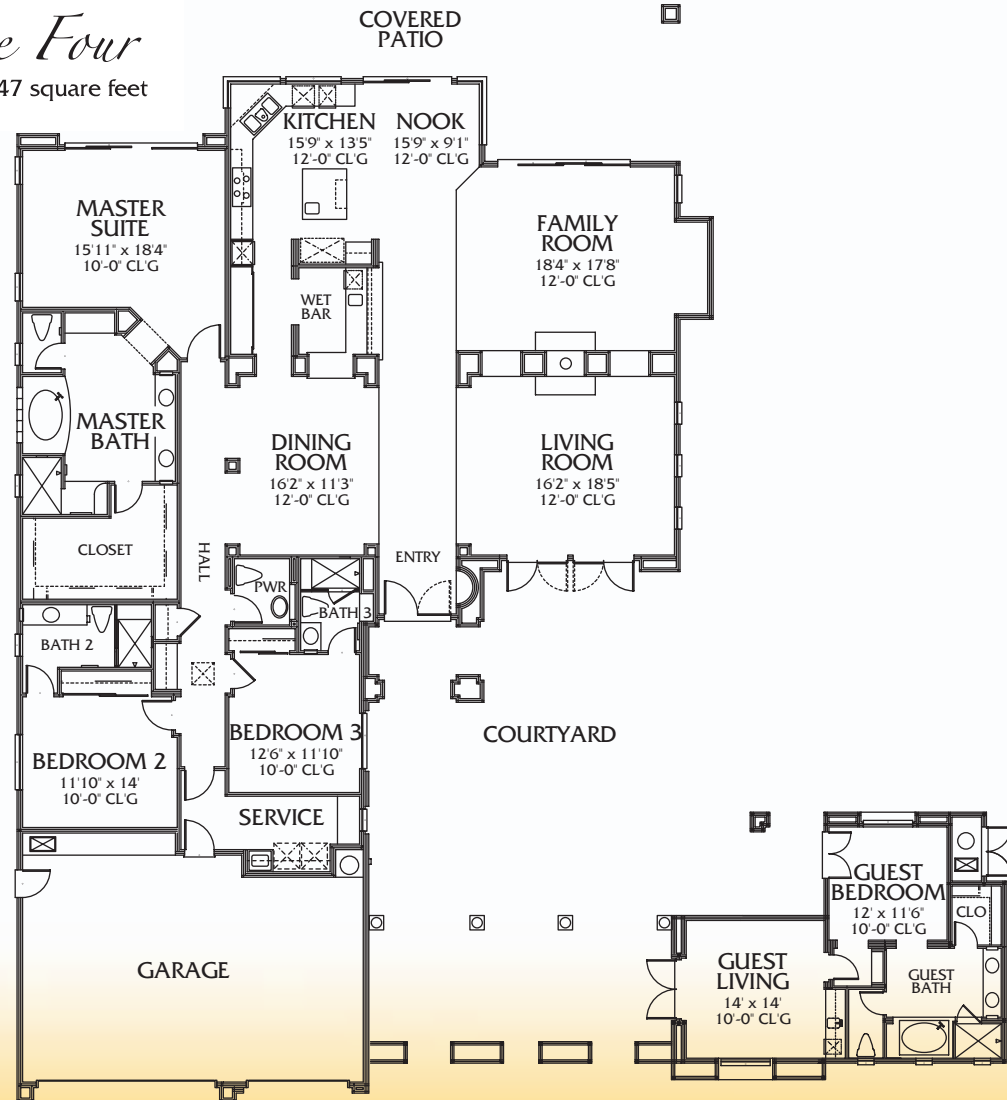
(760) 777.8366



Hole # 3
401 yards, Par Four



Residence Four
Approximately 4,047 square feet



Prices, features and availability are subject to change without notice. See a La Quinta Associates sales executive for details.

56-005 Village Drive
La Quinta, California 92253

The Palms Collection of Fine Homes

Standard Features

Sophisticated Custom-Style Exteriors:

- Authentic Spanish style two-piece clay tile roofs, full mud set
- Stucco smooth finish with designer selected faux tinted finish
- Rich stone veneer on elevations per plan
- Exposed wood rafter tails & ornamental ironwork per plan
- Solid wood overhead garage doors with ornamental iron hardware, stain grade
- Driveways and walkways featuring interlocking pavers
- Patio and terrace surfaces colored salt/broom finish concrete
- Energy efficient vinyl-clad exterior dual pane low E windows
- Solid wood or iron entry gates per plan
- Solid teak wood entry door with custom hardware
- Builder provides fully landscaped and irrigated front, side and rear yards

Elegant Designer Interiors:

- A combination of natural stone, hardwood and ceramic tile flooring per plan
- Marble flooring in master baths with marble wainscoting in showers
- Semi-smooth textured walls with bull nose corners
- Solid stain grade wood interior doors with wrought iron hardware
- Energy efficient gas fireplaces
- Coffered ceilings, with recessed lighting per plan
- Designer selected wool blend carpeting, many options
- Granite slab countertops in all bathrooms and laundry areas per plan
- Spa tub in master bath
- Kohler and Moen plumbing fixtures
- Designer selected two-tone paint

Connoisseur's Kitchens:

- Granite slab countertops
- GE Monogram Collection Stainless Steel Appliances Pro Series, 36" range with convection oven, built-in microwave oven, multi cycle dishwasher, 42" side by side built-in refrigerator
- Custom-style cabinetry

Advanced Amenities:

- Zoned heating and air conditioning, 12 SEER, with programmable thermostats
- Security system pre-wire
- Audio system pre-wire: (4) rooms, in wall volume controls in 3 rooms, main room to have wiring for a center channel, surround channel, sub-woofer and a volume control
- Central panel for CCTV, satellite, broadband, Ethernet jacks in 4 locations for limited area network, fiber optic cable wiring, telephone central connections
- Smoke detectors
- 75 Gallon quick recovery hot water heater with recirculating system
- Fully insulated Title 24 compliant insulation package
- Decora electrical fixtures, ceiling fan pre-wire at all patio and living areas per plan
- Decorator selected lighting; recessed Halogen can lights where shown on plans
 - Gas heating, cooking, hot water, fireplaces, and patio stubbed for gas barbecue
 - Imperial Irrigation District, lower electrical costs



11.12.03

(760) 777-8366

www.ThePalms.cc

Home Owners Association • HOA

The Palms Home Owner's Association (HOA) monthly dues are \$260. Monthly dues include maintenance of all common areas, twenty-four hour manned guard gate and a dog park containing an interactive water feature. The HOA Management Company is Avail Property Management.

Architectural standards are in place at The Palms. To review the CC&Rs, Architectural Guidelines and other related items, please see your Sales Executive.



The Palms Collection
of fine homes



56-005 Village Drive
La Quinta, Ca. 92253

Golf Club Membership

The Palms Golf Club is a traditional private “equity” golf club. Due to its individual membership concept, and 430 individual-member limit, The Palms Golf Club offers a real sanctuary and alternative for serious desert golfers.

Open for play in December 1999, The Palms Golf Club has quickly earned a reputation as one of the desert’s best golfing experiences. Designed by Fred Couples and Brian Curley, The Palms golf course is a “core” course known for its fast, bent grass greens, lush fairways, a caddy program and a commitment to courteous play in under four hours.

Members enjoy a “no tee time required” policy and may walk or ride a cart.

Home ownership at The Palms does not automatically include membership, nor is membership required to purchase a home in the community.

- Membership to The Palms Golf Club is on an “individual” basis, no family memberships offered. Member’s spouse and children may play twelve times per season as guests. All other guests are limited to six rounds per “high” season.
- Only one accompanied guest per member permitted on Saturdays. Three accompanied guests per member are allowed the rest of the week. Four accompanied guests are allowed with permission of the Golf Professional.

- Guest fees are \$80 Monday – Thursday, \$100 Friday – Saturday – Sunday and Holidays. Spouses and children fees are \$65 Monday – Thursday and \$100 on Friday-Saturday-Sunday and Holidays.
- The clubhouse is open for breakfast, lunch and cocktails.
- The dues include all member green fees, cart, locker, range, pro shop buying plan and bag storage.
- Members are not allowed personal golf carts on the course.
- The Palms is an “equity” club owned by the members.
Current equity – 50%

For additional information regarding membership or real estate, please call your Sales Executive at:

(760) 777-8366

For complete membership information, please consult the club documents. Thank you.

11.12.03

(760) 777-8366



www.ThePalms.cc

The Palms of La Quinta · Site Map

